

KD1 NOZZLE INSTRUCTIONS

The following instructions show how to properly use the KD1 Nozzle.

1. Drill one (1) 2 1/2" hole in the wall. The hole should be 18" from the top of the wall and between two studs.
2. Attach 2 1/2" hose from the insulation blowing machine to KD1 Nozzle. Place nozzle in the wall. **See Illust. C.**
NOTE: The 1 1/2" tube inside the wall should be aimed downward to start and the filter bag should be attached to contain excess dust. The filter bag should be emptied periodically depending on nozzle usage.
3. Press KD1 Nozzle firmly against the wall and start the insulation blowing machine so that insulation can quickly and densely pack inside the wall cavity.
4. When the insulation in the wall reaches the level of the nozzle turn the handle 180° (or from position 1, Illust. A, to position 2, Illust. B). This action will direct the tube inside the wall upward which will fill the portion of the wall above the nozzle with insulation.

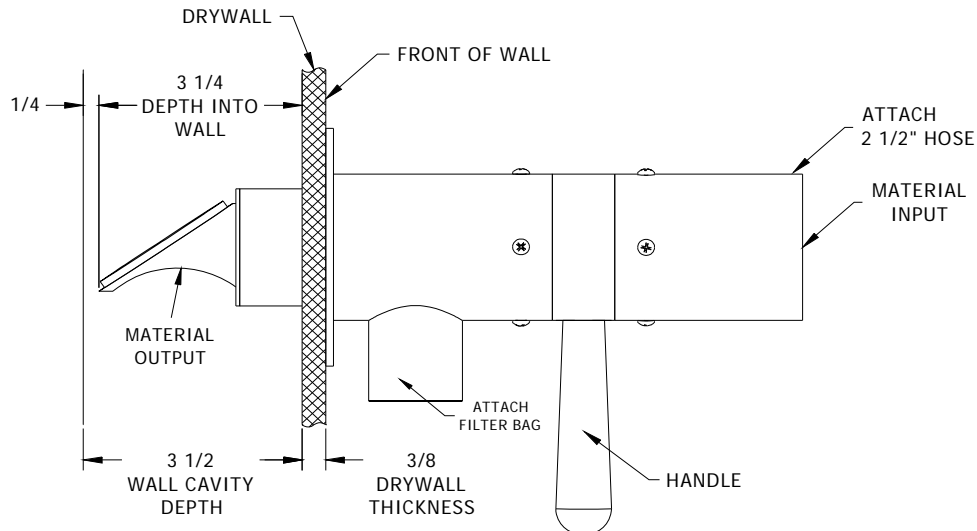


Illust. A
POSITION 1



Illust. B
POSITION 2

5. When the wall cavity is completely filled with insulation rotate the handle around a few times to get a good pack of insulation in the upper part of the wall cavity and around the hole. Then turn the insulation blowing machine off.
6. Remove KD1 Nozzle from the wall so the hole can be plugged and sealed.



Illust. C
KD1 NOZZLE SHOWN IN A 2" x 4" STUDDED WALL